

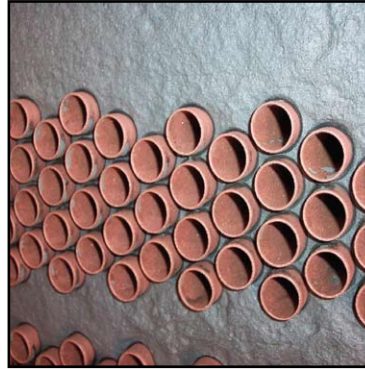
## Belzona Repair and Protection of Refrigeration Unit



General view of the refrigeration unit.



The corroded tube sheet.



The degree of erosion clearly evident after surface preparation.



Completed application.

### STATISTICS

#### CUSTOMER

Five star hotel,  
Egypt

#### APPLICATION DATE

April 2004

#### SUBSTRATE

Steel

#### PRODUCTS

Belzona® 1311  
(Ceramic R-Metal)  
Belzona® 1321  
(Ceramic S-Metal)

#### APPLICATION SITUATION

Collapsible roof over conveyor belts - in the area between the coalyard and the boiler.

#### PROBLEM

Water getting through collapsible roof seams wets coal and reduces fuel efficiency. Work area extremely dirty due to coal fines from belts.

#### APPLICATION METHOD

Application was carried out in accordance with a modified version of Belzona® Know-How System Leaflet RPA-1.

#### BELZONA FACTS

Belzona® 3111 is ideal for waterproofing roofs where movement is present. Seams were designed into this roof as a safety precaution and the reinforced Belzona system ensures areas below stay dry.