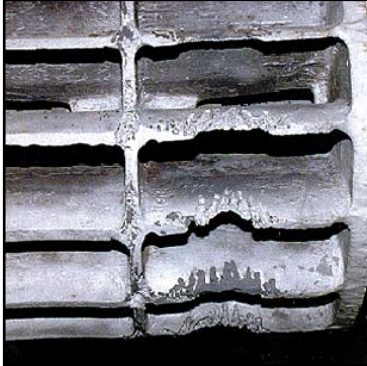


Belzona Repairs Vacuum Pump Rotor



Extensive damage of vacuum pump easily visible



Refurbished rotor



Rotor after many years in service

STATISTICS

CUSTOMER

Sugar Cane Mill in Minnesota,
U.S.A.

APPLICATION DATE

1993

SUBSTRATE

Cast Iron

PRODUCTS

Belzona® 1111 (Super Metal)
Belzona® 1341 (Supermetalgilde)

APPLICATION SITUATION

Vacuum pump rotor

PROBLEM

Cavitation damage was the principal problem on this rotor.

APPLICATION METHOD

The application was carried out in accordance with Belzona Know-How Leaflet CEP-1.

BELZONA FACTS

Belzona's repair system has proven resistant to cavitation. The repair has lasted over five years.