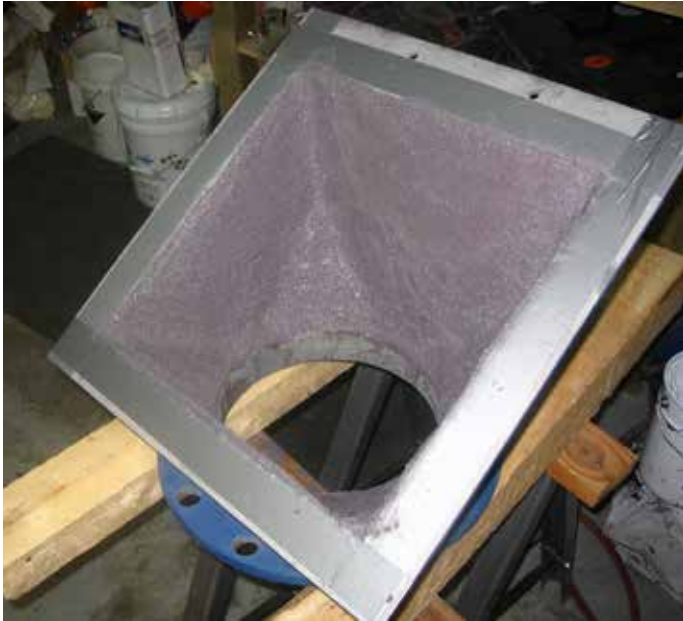


Industrial Paste-Grade Lining for Protection Against Abrasive Attack



Belzona 1812 (Ceramic Carbide FP) is a two-component repair and protective coating for the protection of surfaces subject to abrasive attack.

Belzona 1812 is designed to provide protection against abrasive particles smaller than sand including silt, clay or dust.

It can be applied without the need for specialist tools. It is a paste-grade material which will adhere to a wide range of substrates, providing a seamless abrasion resistant lining.

TECHNICAL DATA	Mixing ratio (Base : Solidifier)	14.5 : 1 by weight* *Refer to IFU for thickness greater than 38 mm (1 1/2 inch)		
	Working life	30 minutes at 25°C (77°F)		
	Shelf life	3 years		
	compressive strength	102.9 MPa (14,930 psi) at 20°C (68°F) cure and test		
	Hardness	Shore D: 89.5	Barcol: 40	
	Adhesion (pull-off) *cohesive failure of substrate	Mild steel: 26.8 MPa (3,880 psi)	Concrete: 6.8 MPa (980 psi)*	
	Shear strength	45.4 MPa (6,590 psi) at 20°C (68°F) cure and test		
	Volume capacity	4360 cm ³ (266 in ³) / 6.95 kg at 12-100 mm (0.5-4 in)		
	Tensile strength	44.2 MPa (6,410 psi) at 20°C (68°F) cure and test		
Adhesion (tensile shear)	Mild steel: 24.6 MPa (3,570 psi)	Stainless steel: 20.0 MPa (2,900 psi)		

CURE TIMES	Temperature	15°C (60°F)	20°C (68°F)	30°C (86°F)	25°C (77°F)
	Cure times	48 hours	24 hours	12 hours	5 hours

*Please consult the Product Specification Sheet (PSS) and Instructions for Use (IFU) for the latest technical data.



**CORROSION
RESISTANT**



**ABRASION
RESISTANT**



SOLVENT FREE



**BROAD SERVICE
TEMPERATURE RANGE**

Key Benefits:

- **Excellent abrasion resistance**

Belzona 1812 exhibits outstanding abrasion due to a hardness comparable to basalt. Additionally, it can withstand dry abrasion up to temperatures of 150°C (302°F).

- **Easy to apply**

The material is easy to mix and does not require any additional aggregates. During application, no specialist tools are necessary and it is possible to apply thick and thin sections in one operation.

- **Impressive adhesive properties**

Belzona 1812 can bond to all rigid substrates, including steel and cast iron.

- **Flawless finish**

It is possible to feather edge Belzona 1812 to provide the desired effect. It is a seamless material which upon curing will not shrink, expand or distort.

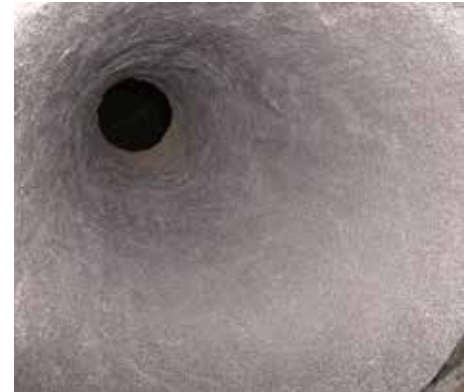


Application Areas:

- Centrifuges
- Chutes
- Cyclones
- Deflector plates
- Hoppers
- Impellers
- Mixing bowls
- Nozzles
- Pipe bends
- Wear plates



Steel cone before coating



Steel cone coated in Belzona 1812

For more information, please contact your local Belzona representative:

QUALITY PRODUCTS - TECHNICAL SUPPORT

Belzona products are manufactured under an ISO 9001 Registered Quality Management System.

Belzona has a global distribution network of over 140 Distributors operating in 120 countries. Local support is provided by a trained Technical Consultant who will diagnose the problem, recommend the solution and provide 24-hour, on-site application supervision and advice.