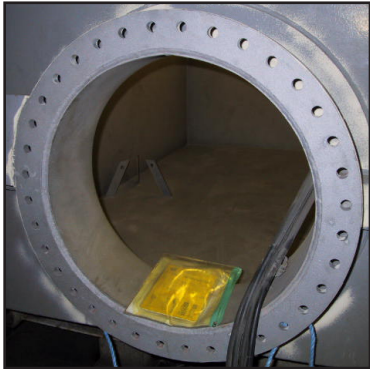
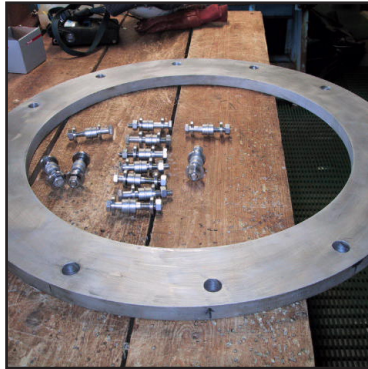


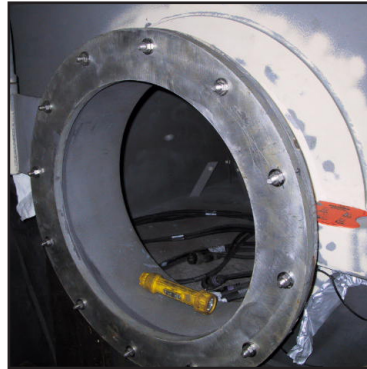
## Forming New Manway Sealing Face



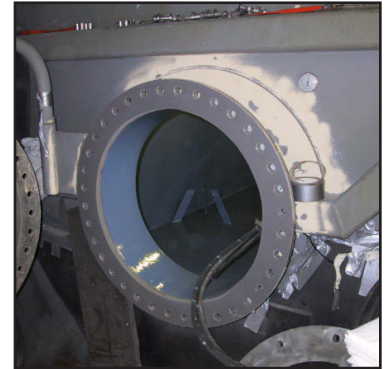
Manway blasted ready for forming



Former and specially fabricated shim inserts



Forming the Manway



Manway formed ready for service

### STATISTICS

#### CUSTOMER

Oil major,  
North Sea

#### APPLICATION DATE

March 2006

#### SUBSTRATE

Carbon steel

#### PRODUCTS

Belzona® 1111  
(Super Metal)

#### APPLICATION SITUATION

A vessel was undergoing a change of use and required to have the manway sealing face protected from the new operational fluids.

#### PROBLEM

Existing Carbon steel would be subject to corrosive attack if the manway was not isolated.

#### APPLICATION METHOD

Application completed using a modified VPF-13 Know How System.

#### BELZONA FACTS

Hot work was not permitted so a weld overlay was not feasible and the finished job required to be a sealing face so hand coating was not deemed suitable. Belzona provided a perfectly formed corrosion resisting sealing face.