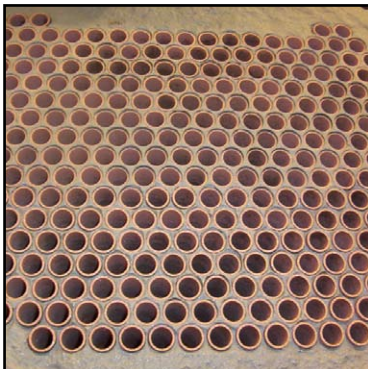


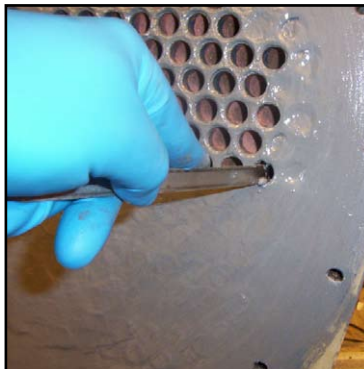
Belzona Extends Chiller Life



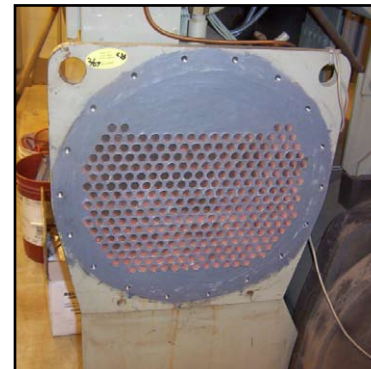
Tube sheet before blast cleaning.



Grit blasted tubesheet.
Damage is very evident.



Excess material removed from
tube with the smooth side of
hacksaw blade.



Tube sheet ready for years of
trouble free service.

STATISTICS

CUSTOMER

Museum,
Kansas, USA

APPLICATION DATE

February 2007

SUBSTRATE

Steel and Copper

PRODUCTS

Belzona® 1311
Belzona® 1321

APPLICATION SITUATION

Chiller is essential for comfort and protection of exhibits at this Museum.

PROBLEM

Corrosion threatened the life of the chiller. With tight budgets the loss of a chiller would be unacceptable.

APPLICATION METHOD

Application was carried out in accordance with Belzona Know-How System Leaflet HEX-1 & -3

BELZONA FACTS

There were two choices available. Continue with the current maintenance program and ignore the problem until failure or employ the Belzona Solution and extend chiller life.