

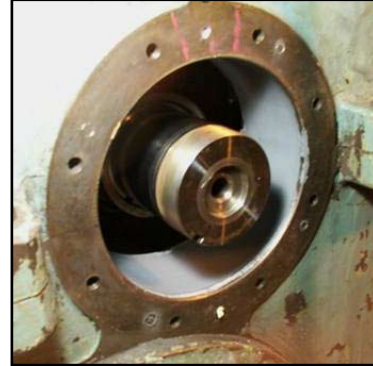
## Belzona Rebuilds Bearing Surface on Paper Machine Drive



*The bearing fit area ground to provide a rough surface and degreased with Belzona 9111*



*The mold was positioned carefully before injecting Belzona 1321*



*The mold removed, revealing a perfectly formed new bearing surface*

### STATISTICS

#### CUSTOMER

Pulp & Paper Operation, BC,  
Canada

#### APPLICATION DATE

2001

#### SUBSTRATE

Steel

#### PRODUCTS

Belzona® 1321 (Ceramic S-Metal)

#### APPLICATION SITUATION

Bearing fit on paper machine drive

#### PROBLEM

The worn bearing fit on the paper machine drive was causing gear lash problems.

#### APPLICATION METHOD

Application carried out in accordance with Belzona Know-How System Leaflet MPT-7.

#### BELZONA FACTS

There is a long and successful history of using this type of repair procedure in these facilities without any failures. This application also saves a great deal of downtime as there is no need to disassemble the housing.