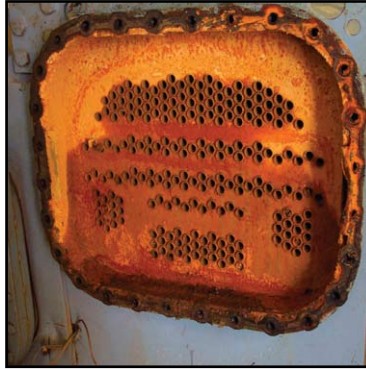


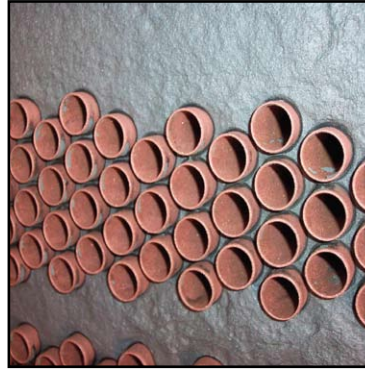
Belzona Repair and Protection of Refrigeration Unit



General view of the refrigeration unit.



The corroded tube sheet.



The degree of erosion clearly evident after surface preparation.



Completed application.

STATISTICS

CUSTOMER

Five star hotel,
Egypt

APPLICATION DATE

April 2004

SUBSTRATE

Steel

PRODUCTS

Belzona® 1311
(Ceramic R-Metal)
Belzona® 1321
(Ceramic S-Metal)

APPLICATION SITUATION

Collapsible roof over conveyor belts - in the area between the coal yard and the boiler.

PROBLEM

Water getting through collapsible roof seams wets coal and reduces fuel efficiency. Work area extremely dirty due to coal fines from belts.

APPLICATION METHOD

Application was carried out in accordance with a modified version of Belzona® Know-How System Leaflet RPA-1.

BELZONA FACTS

Belzona® 3111 is ideal for waterproofing roofs where movement is present. Seams were designed into this roof as a safety precaution and the reinforced Belzona system ensures areas below stay dry.