

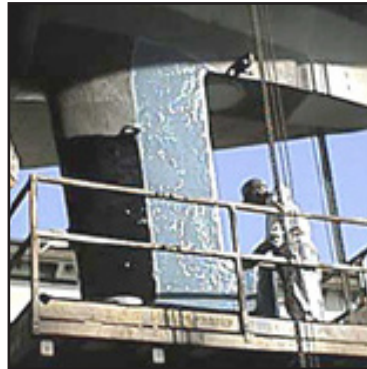
Belzona Keeps This Passenger Ferry Running Smoothly



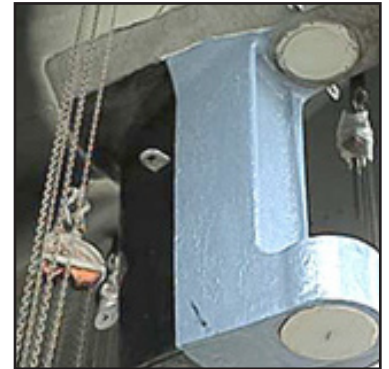
Cavitation clearly evident



Rebuilding with Belzona® 1121 (Super XL-Metal)



Belzona® 2141 being applied



Final application

STATISTICS

CUSTOMER

Ferry operator,
British Columbia, Canada

APPLICATION DATE

April 2002

SUBSTRATE

Steel

PRODUCTS

Belzona® 2141
Belzona® 1341
Belzona® 1121

APPLICATION SITUATION

Rudder horn of large ferry vessel.

PROBLEM

The sides and trailing surfaces of this large rudder horn suffered from cavitation and significant metal loss.

APPLICATION METHOD

The application was carried out in accordance with Belzona Know-How System Leaflets SOS-1 and -2.

BELZONA FACTS

Belzona® 2141 has exhibited excellent cavitation resistance as document-ed by the ARL at Penn State. Alternatively, you would have to weld up hundreds of damaged areas or cut out a large section and weld in new plate.