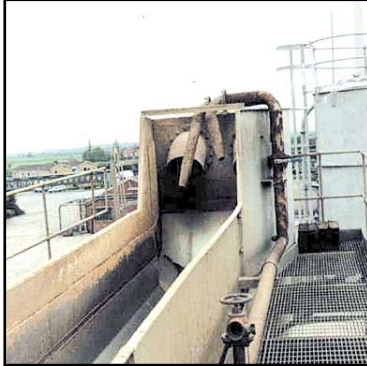


Belzona® 1811 Protects Beet Flume Weld Joints

General view of the application site



Equipment prior to surface preparation



Application completed with the Belzona® 1811

STATISTICS**CUSTOMER**

Sugar factory in the United Kingdom

APPLICATION DATE

1999

SUBSTRATE

Stainless steel plate

PRODUCTS

Belzona® 1811 (Ceramic Carbide)

APPLICATION SITUATION

The beet flume located between the beet pumps and the stone catcher.

PROBLEM

Extensive abrasion and eventual failure of the weld seams connecting the steel plates that make up the flume.

APPLICATION METHOD

The application was carried out in accordance with Belzona Know-How System Leaflet SHM-13.

BELZONA FACTS

Abrasion of the weld seams - if allowed to continue - would have led to impaired operating efficiency. Repair or replacement during the manufacturing campaign would have required significant downtime and resulted in a major loss of revenue. Belzona product lent itself to application within the confines of the flume channel. By applying Belzona to seams in the flumes most vulnerable areas during annual outage, only sacrificial wear of the product takes place during the campaign, thereby leaving the weld seams intact.