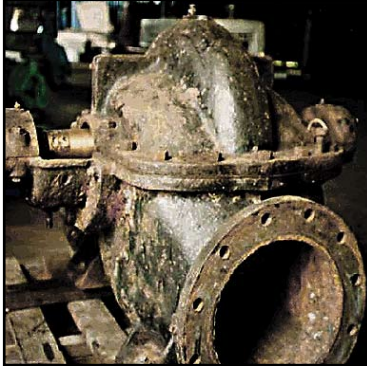


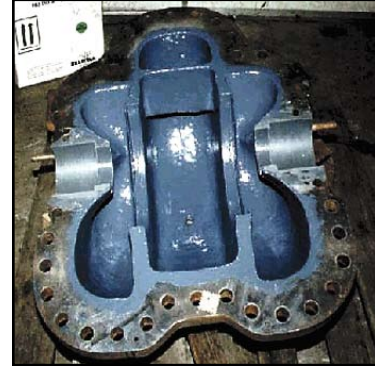
Belzona Provides Solution to Water Injection Pump



Split casing water injection pump



Rebuilt wear ring seat and stuffing box



Completely refurbished casing box

STATISTICS

CUSTOMER

Sugar Cane Mill in Australia

APPLICATION DATE

1996

SUBSTRATE

Carbon steel

PRODUCTS

Belzona® 1311 (Ceramic R- Metal)

Belzona® 1321 (Ceramic S-Metal)

APPLICATION SITUATION

Water injection pump

PROBLEM

General erosion/corrosion on pump volute, wear ring seats and stuffing box.

APPLICATION METHOD

The application was carried out in accordance with Belzona Know-How Leaflets CEP-1,2 and 3.

BELZONA FACTS

Water injection pumps are found throughout sugar mills and normally suffer from abrasion, corrosion and/or abrasion.